



m c g architecture

949.553.1117 949.474.7056

18201 Von Karman Ave., Suite 250, Irvine, CA 92612-1071

Seal:

A Project for:

Pierson Professional Plaza
Desert Hot Springs, CA

Client:

Tahiti Partners Real Estate
Development Corporation

5305 EAST SECOND STREET, SUITE 204
LONG BEACH, CALIFORNIA 90803
TEL: (562) 433-1286

Revisions:

© MCG ARCHITECTS 2008 ALL RIGHTS RESERVED
NOTE: This information is conceptual in nature and is subject to adjustments pending further verification and Client, Tenant, and Governmental Agency approvals. No warranties or guarantees of any kind are given or implied by the Architect.

No.	Description	Date
Project No.:		07372.01
Drawn By:		
Reviewed By:		
Scale:		
Date:		04-09-08
Filename:		
Sheet Title:		

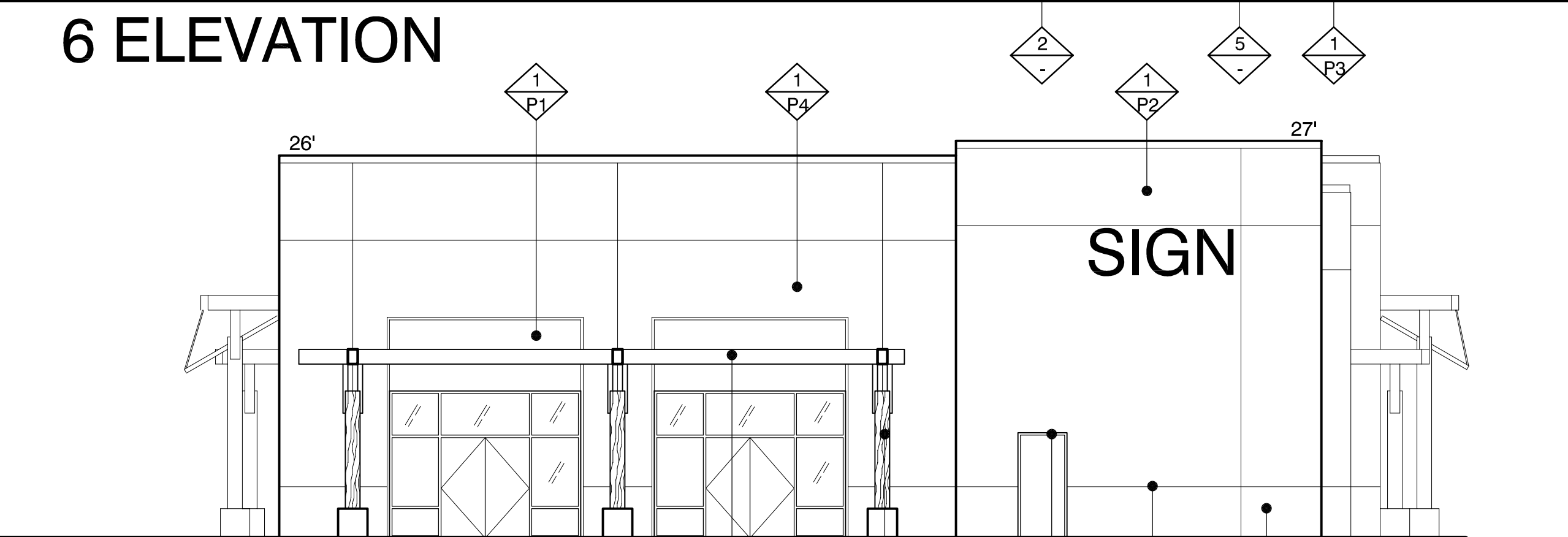
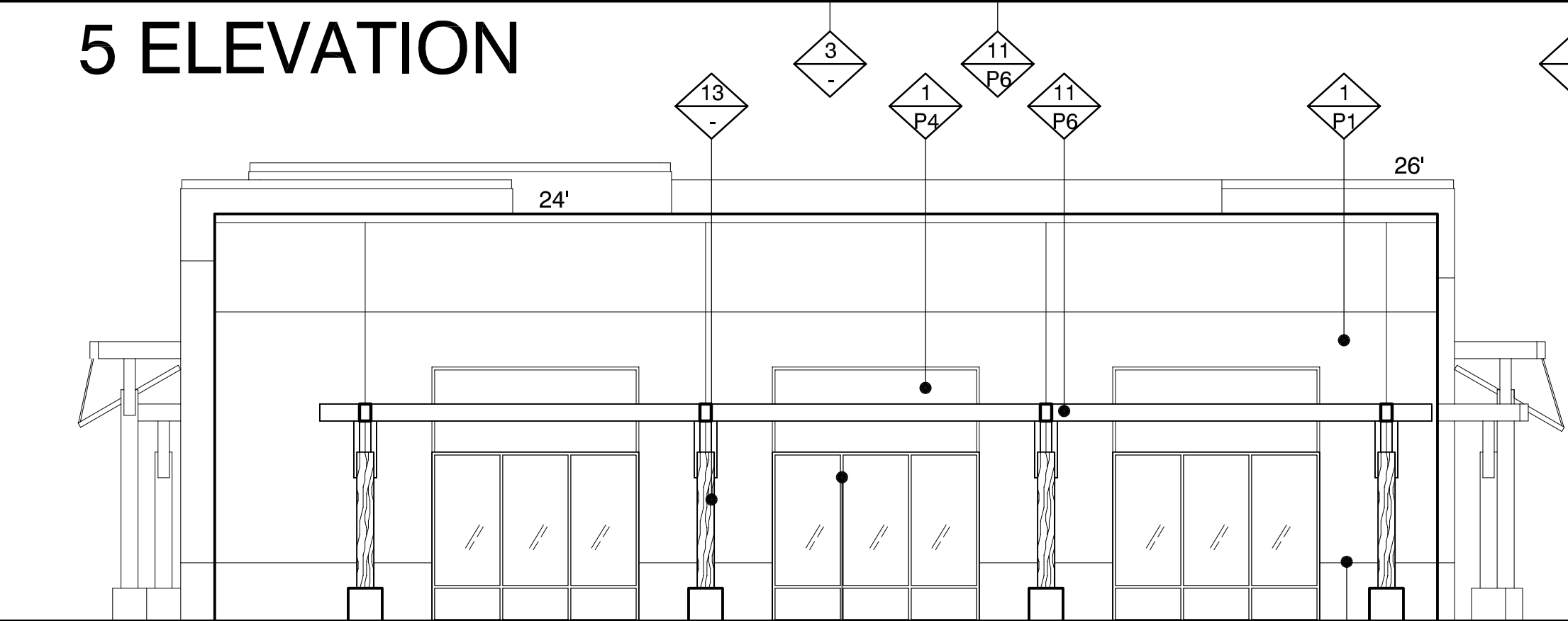
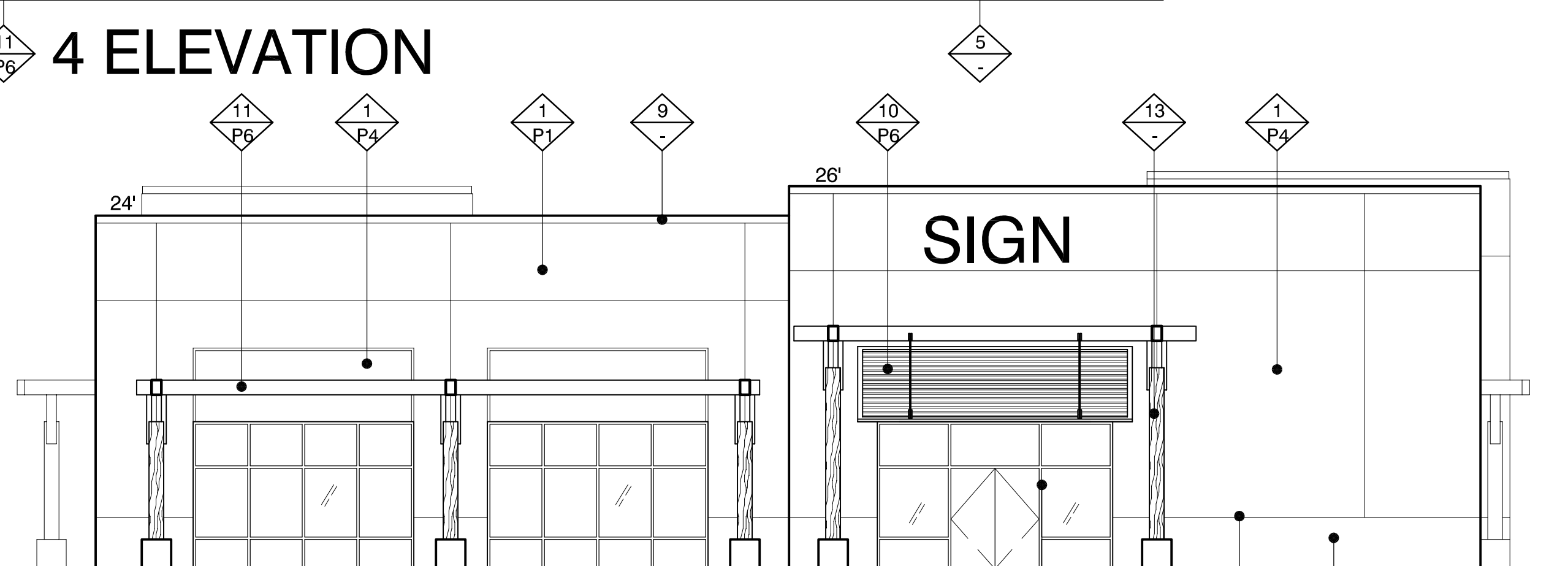
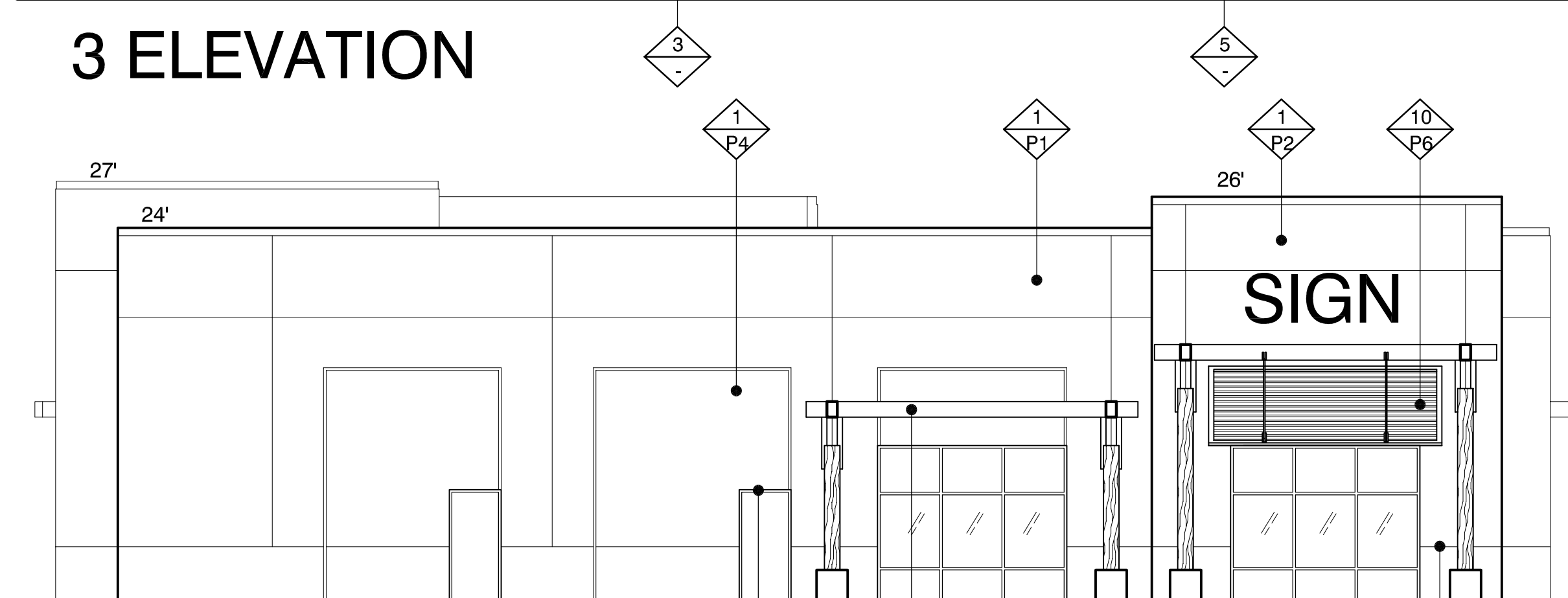
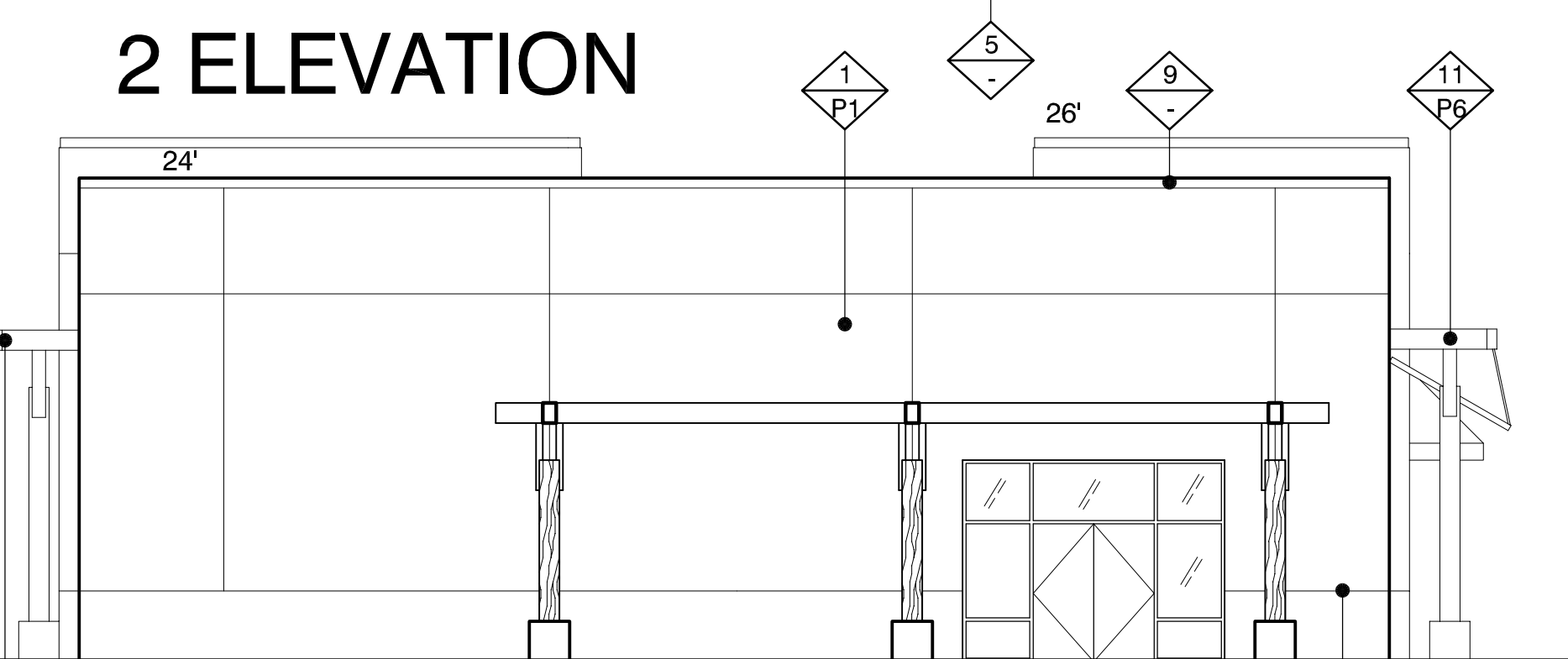
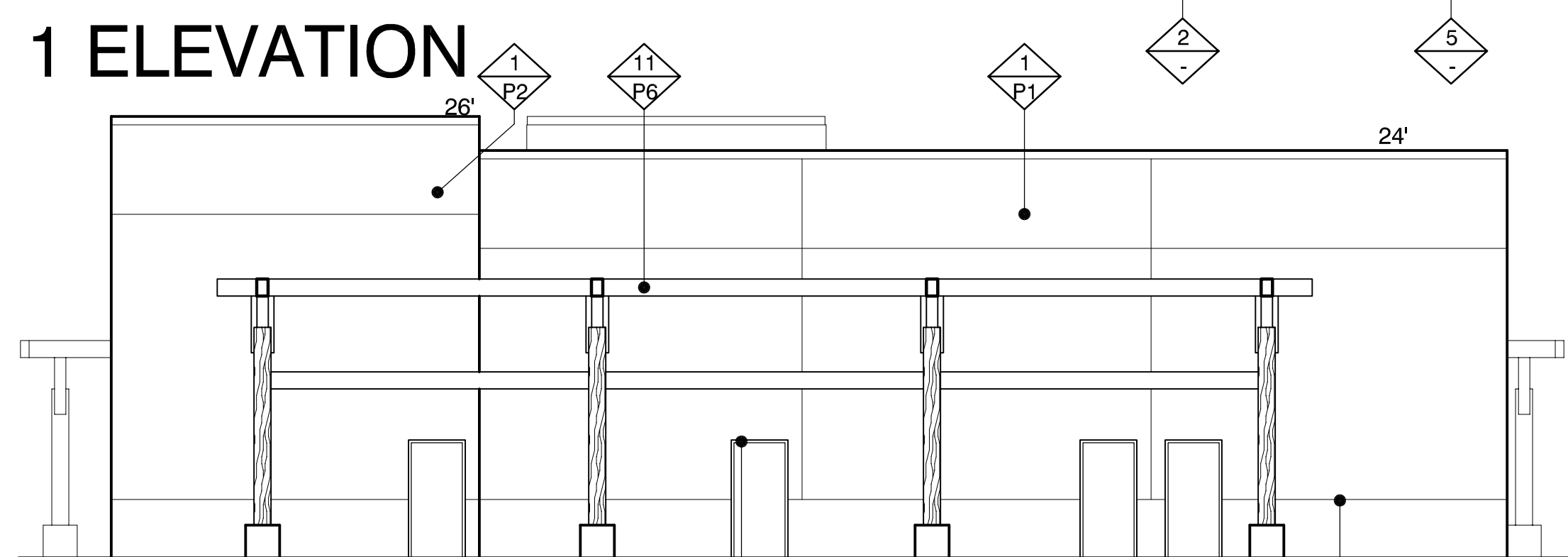
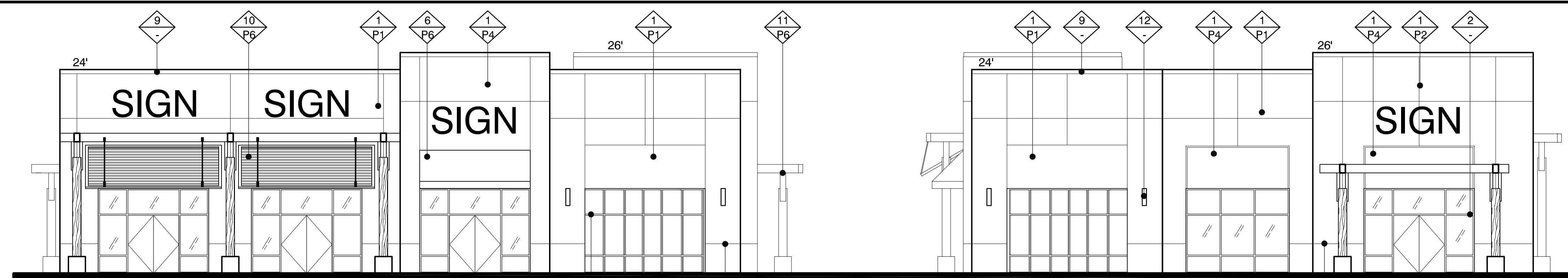
EXTERIOR ELEVATIONS

Sheet #:

A-202

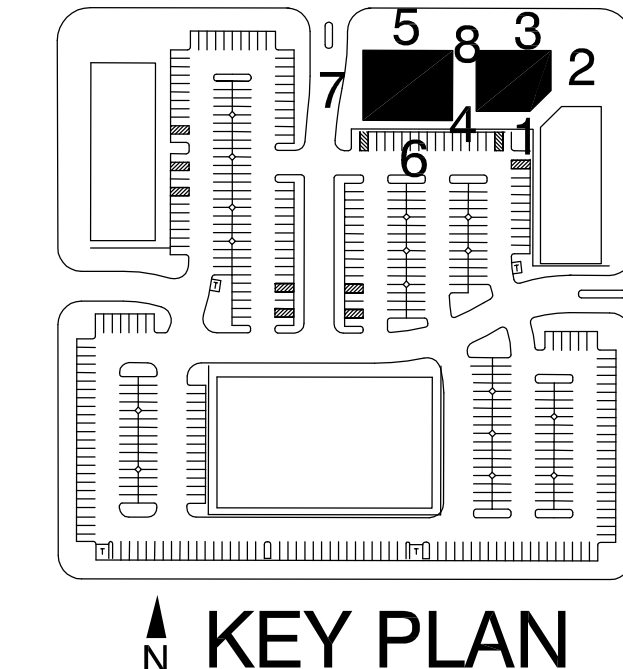
© MCG ARCHITECTS 2008 ALL RIGHTS RESERVED

MATERIAL	COLOR
1 EXTERIOR STUCCO FINISH	P1 'ANGELICA BLOSSOM' (7711W) FRAZEE PAINT
2 ALUMINUM STOREFRONT	P2 'FENLAND' (8174W) FRAZEE PAINT
3 HOLLOW METAL DOOR AND FRAME	P3 'ROCKBRIDGE' (8703M) FRAZEE PAINT
4 GLASS DOOR	P4 'SPICE BOUNTY' (8204M) FRAZEE PAINT
5 STUCCO CONTROL JOINT	P5 MATCH ADJACENT COLOR FRAZEE PAINT
6 METAL CANOPY	P6 TRUE METALLIC FINISHES - ALUMINIUM - 1C 1077-02MT ENDURALUME - TNE MEC
7 2" ALUMINIUM REVEAL NATURAL COLOR	
8 BREAK METAL	
9 METAL CAP FLASHING	
10 ALUMINIUM LOUVERS	
11 STEEL TRELIS STRUCTURE	
12 WALL MOUNT - LUMINAIRES MOUNTED BACK TO BACK METALLIC BRONZE - NIKKO+	
13 12" x 12" WOOD POST	



BUILDING 3 (Shops) and 4 (Rest)

ELEVATIONS
SCALE: 1/8" = 1'-0"



KEY PLAN