



m c g architecture

949.553.1117 949.474.7056  
18201 Von Karman Ave., Suite 250, Irvine, CA 92612-1071

Seal:

A Project for:

Piercion Professional Plaza  
Desert Hot Springs, CA

Client:  
Tahiti Partners Real Estate  
Development Corporation  
5305 EAST SECOND STREET, SUITE 204  
LONG BEACH, CALIFORNIA 90803  
TEL: (562) 433-1286

Revisions:

© MCG ARCHITECTS 2008 ALL RIGHTS RESERVED  
NOTE: This information is conceptual in nature and is subject to adjustments pending further verification and Client, Tenant, and Governmental Agency approvals. No warranties or guarantees of any kind are given or implied by the Architect.

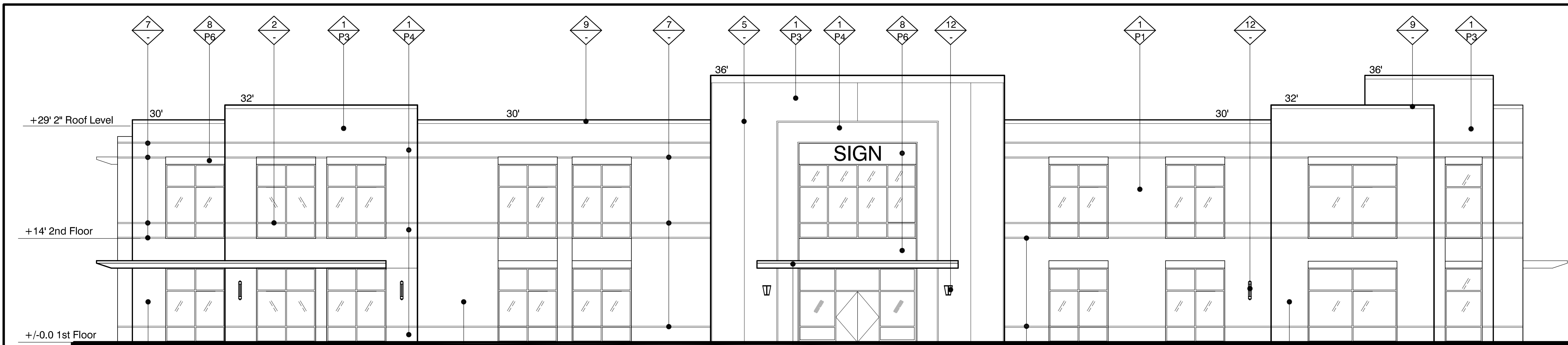
No.	Description	Date
Project No.:		07372.01
Drawn By:		
Reviewed By:		
Scale:		
Date:		04-09-08
Filename:		
Sheet Title:		

EXTERIOR ELEVATIONS

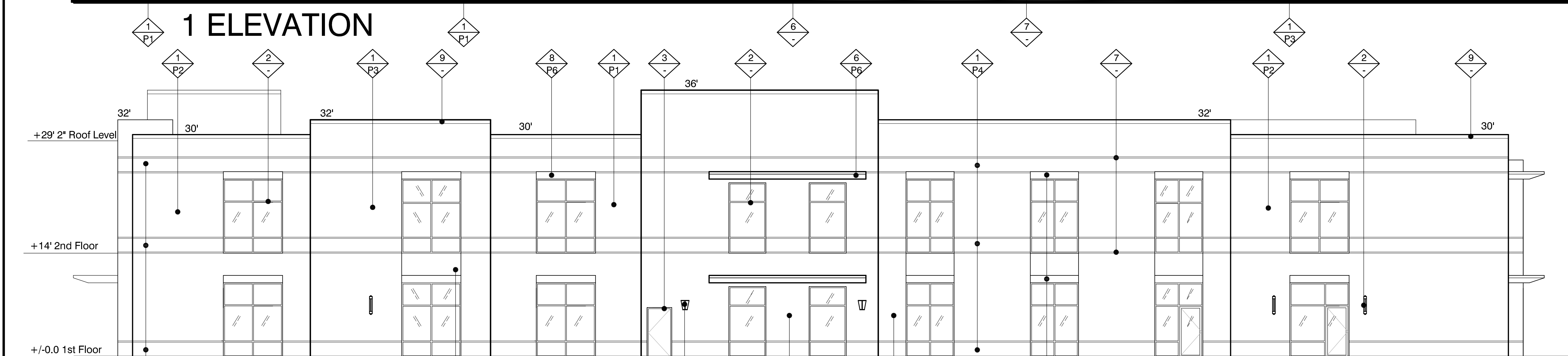
Sheet #:

A-200

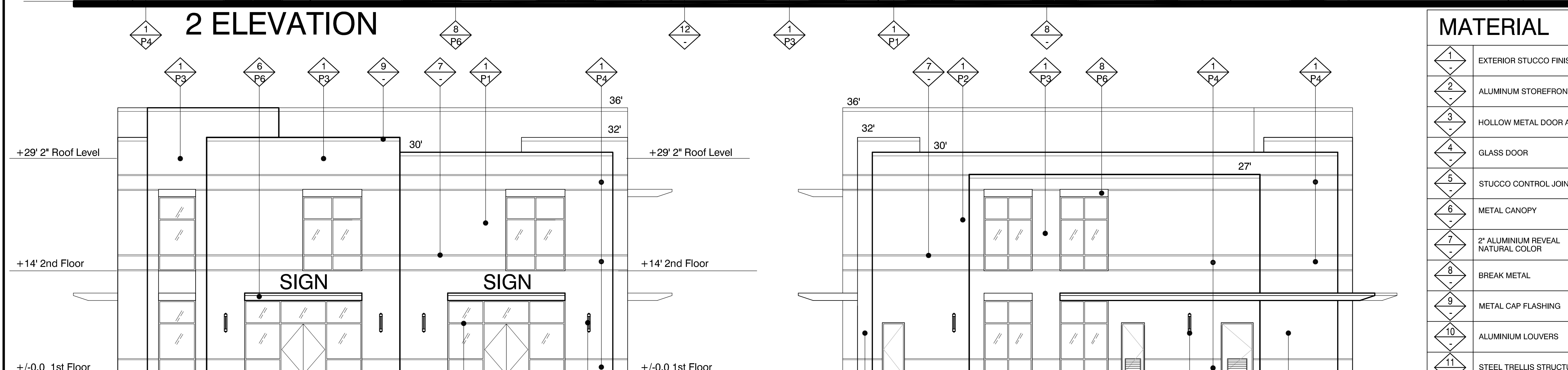
© MCG ARCHITECTS 2008 ALL RIGHTS RESERVED



1 ELEVATION



2 ELEVATION



3 ELEVATION

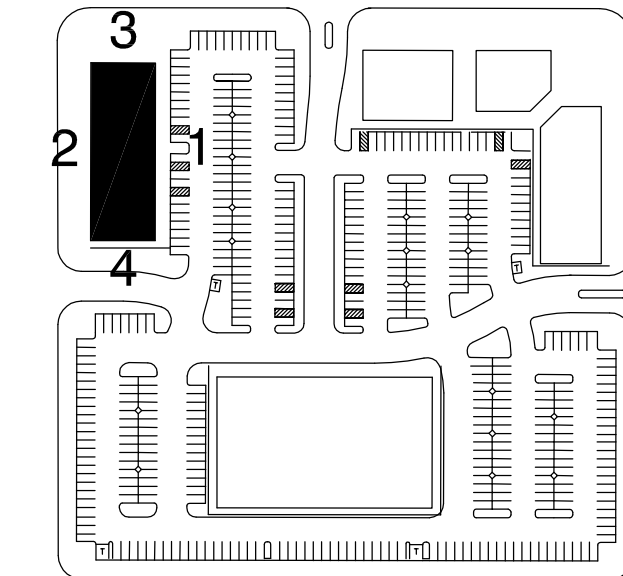


4 ELEVATION

MATERIAL	COLOR
1 EXTERIOR STUCCO FINISH	P1 'ANGELICA BLOSSOM' (7711W) FRAZEE PAINT
2 ALUMINUM STOREFRONT	P2 'FENLAND' (8174W) FRAZEE PAINT
3 HOLLOW METAL DOOR AND FRAME	P3 'ROCKBRIDGE' (8703M) FRAZEE PAINT
4 GLASS DOOR	P4 'SPICE BOUNTY' (8204M) FRAZEE PAINT
5 STUCCO CONTROL JOINT	P5 MATCH ADJACENT COLOR FRAZEE PAINT
6 METAL CANOPY	P6 TRUE METALLIC FINISHES - ALUMINIUM - 1C 1077-02MT ENDURALUME - TNEMEC
7 2" ALUMINIUM REVEAL NATURAL COLOR	
8 BREAK METAL	
9 METAL CAP FLASHING	
10 ALUMINIUM LOUVERS	
11 STEEL TRELLIS STRUCTURE	
12 WALL MOUNT - LUMINAIRES MOUNTED BACK TO BACK METALLIC BRONZE - NIKKO+	
13 12" x 12" WOOD POST	

# BUILDING 1 ELEVATIONS

SCALE: 1/8" = 1'-0"



KEY PLAN